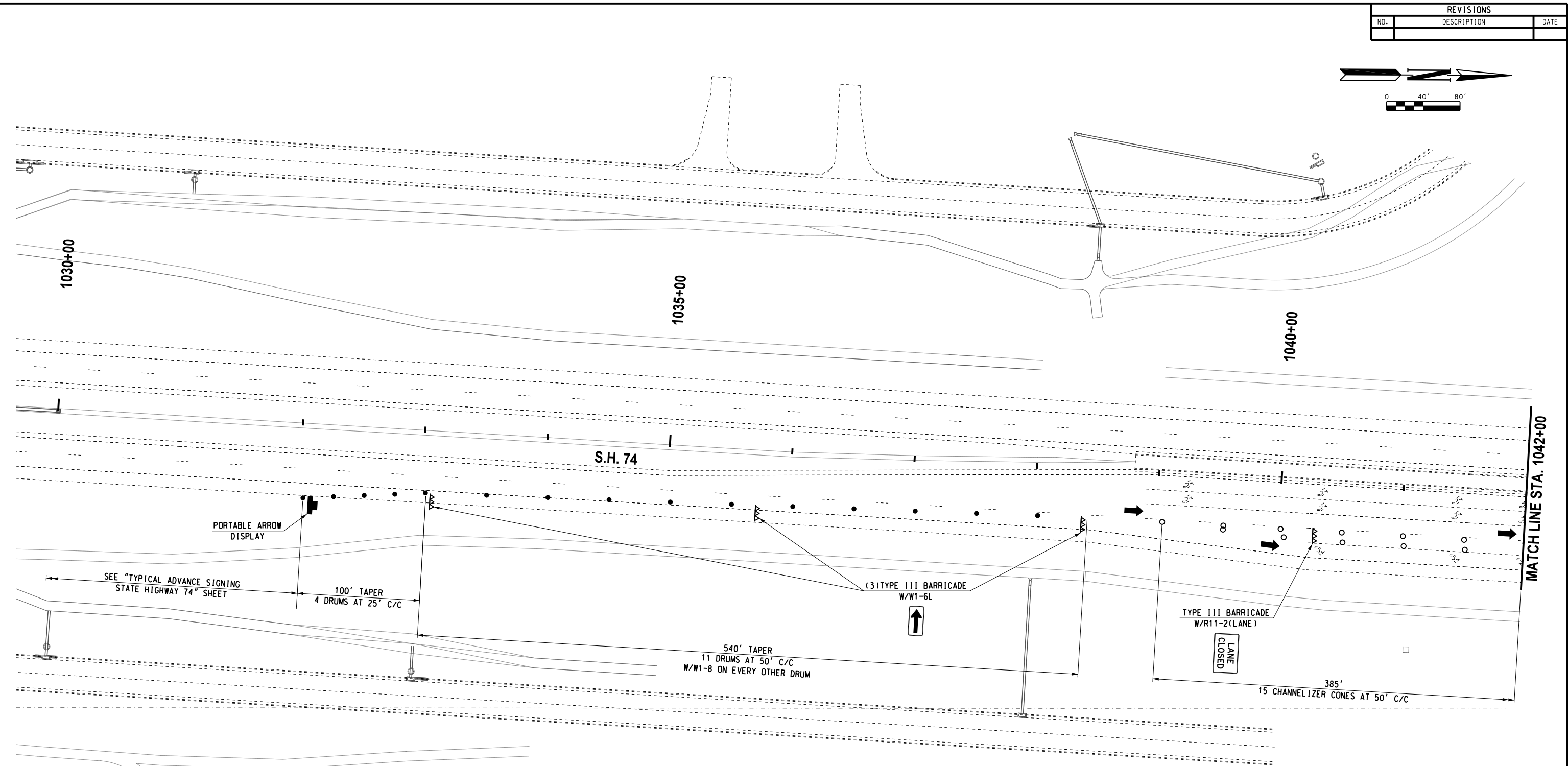
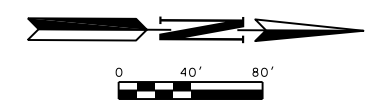


REVISIONS		
NO.	DESCRIPTION	DATE



**ALL PAVEMENT MARKINGS  
SHALL BE REMOVABLE  
TAPE**

**CONTRACTOR SHALL KEEP  
11' MINIMUM LANES UNLESS  
OTHERWISE NOTED.**

**CONTRACTOR TO PROVIDE  
ACCESS TO ALL DRIVEWAYS  
DURING CONSTRUCTION.**

LEGEND	
△△△	- TYPE III BARRICADE W/ TWO TYPE "A" LIGHTS
●	- DRUM
○	- CHANNELIZER CONE
▬	- PORTABLE CONC. BARRIER WALL
▬▬▬	- CONSTRUCTION ZONE IMPACT ATTENUATOR
■	- WORK AREA

Design	RWR	08/10/17
Drawn	GDB	08/10/17



**TRAFFIC CONTROL  
PHASES 3U,4A & B (SHEET 1 OF 9)  
S.H. 74 (STA. 1030+00 TO 1042+00)**  
State Job No. 14964(08) Sheet No. T85

08/10/17 G:\0\Projects\T-16628 SH 74 @ NW 178th, NW 192nd & NW 206th\CAD\TC PHASE 3U,4A,B,SH 74.dgn